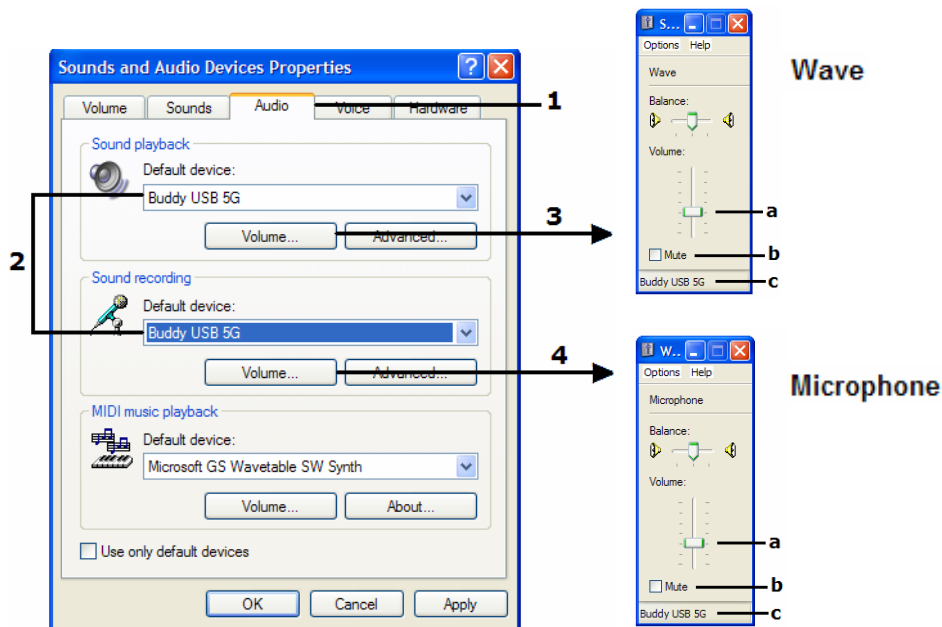


Appendix: Routine Maintenance > Audio Settings



The Sound and Audio Devices Screen:

1. The **Audio Tab**.
2. **Confirm the USB sound card device** in both fields.
3. In the **Sound Playback** box > click the Volume button > the Wave Screen appears.
4. In the **Sound Recording** box > click the Volume button > the Microphone Screen appears.

The Wave and Microphone Screens:

- a. Adjust the Volume sliders to **30-40%**.
Start with **30%** then increase to 40% if needed.
- b. The Mute boxes are **not** checked.
- c. **Confirm the USB device**.



The Master Volume:



The Sound and Audio Devices Screen:

1. The **Volume Tab**.
2. Confirm the USB sound card device.
3. Adjust the Master Volume slider to **30-40%**.
Start with **30%** then increase to 40% if needed.
4. The Mute box is **not** checked.

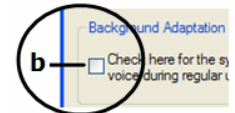
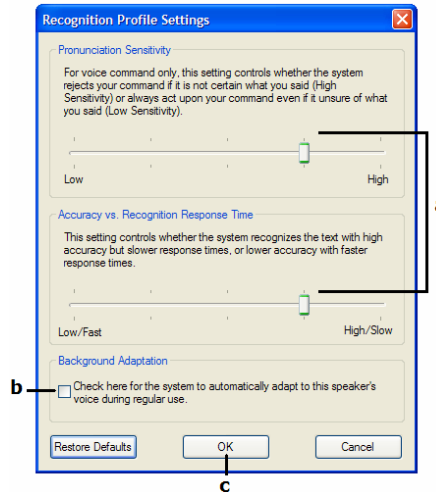
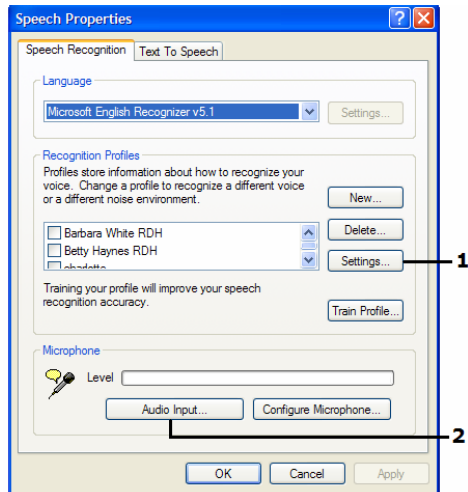
Appendix: Routine Maintenance > Speech Settings

The Speech Properties Screen:

1. Navigate from the Desktop > **Speech icon**
2. Open **PerioPal > Settings button > Preference Screen > Speech Settings button.**



The Speech Properties Screen:



This box is UNCHECKED.

1. Click Settings:



- a. Pronunciation Sensitivity:** Move the slider to the $\frac{3}{4}$ mark.
- Accuracy vs. Recognition Response:** Move the slider to the $\frac{3}{4}$ mark.
- b. The Background Adaptation Box is NOT checked.**
- c. Click OK** to return to the **Speech Properties Screen**.

2. Click Audio Input:



- d. The 'Use this audio input device' button is selected.**
- e. The USB Sound Device is selected.**
- f. Click OK** to return to the **Speech Properties Screen**.

