

What Is PerioPal?

PerioPal is a verbal software tool allowing hands-free periodontal charting. Using PerioPal, exam findings are recorded into a headset attached to the user's choice of hardware – laptop, desktop, or integrated system. **PerioPal supports the manual input** of periodontal data using mouse and keyboard.

PerioPal software was created using Microsoft's Speech Application Programming Interface (SAPI). SAPI is designed to connect speech recognition engines and application programs making it easier and more affordable for programs to be speech enabled. Microsoft's Speech software is routinely included with Windows XP and Office XP products.

PerioPal uses Voice Commands. Only predetermined commands available for input are recognized.

PerioPal's Voice Command vocabulary consists of abbreviations and shortcut commands that enable accurate recording of periodontal data in a shorter amount of time by significantly reducing the number of spoken words. These commands are used to verbally record, chart, and store tooth types, probing depths, gingival margins, bleeding, suppuration, and other clinical findings such as mobility, furcations, plaque, and gingival attachment levels. Clinical attachment levels are automatically calculated.

How Does PerioPal Work?

During a periodontal exam, a clinician speaks PerioPal's Voice Commands into a headset microphone attached to a computer. The user's verbal commands are recognized and converted into word signals.

These signals are matched with a list of authorized word commands that are stored in PerioPal's command bank. When the word signals correspond to the commands, data and image indicative of those commands are displayed on the computer screen.

When the exam is complete, the clinician may stop recording, store the data, and print 3-4 different reports with the captured exam data.

How Is PerioPal Different From Existing Speech Driven Periodontal Charting Systems?

TECHNOLOGY: dictation vs. voice command

Most voice periodontal charting software programs use **Voice Dictation** technology to control the verbal input of the exam. The big drawback of using a voice dictation system is that each word must be compared to thousand of words in a large vocabulary before it can be recognized. Voice dictation is designed for building text sentences and paragraphs.

PerioPal uses **Voice Command** technology. This speech system restricts the vocabulary to less than 200 specifics words, significantly improving accuracy and speed in word recognition. With PerioPal there are fewer than 100 recognized words with any given screen. Although periodontal exams are tedious and repetitive, there are relatively few words needed to report the patient's oral health.

PerioPal was designed for voice input. Other voice activated systems were designed for mouse and keyboard input, then modified to support voice activation. Every facet of PerioPal is designed to facilitate accurate and rapid data capture during the recording of a periodontal exam. Mouse entry is supported for users who prefer assisted charting and allows for rapid and effective entry of exam data in a single pass.

TECHNIQUE: reduce the number of spoken words

PerioPal's vocabulary consists of **abbreviations and shortcut** commands that enable the accurate recording of periodontal data in a shorter amount of time by reducing the number of spoken words.

ABBREVIATION COMMANDS combine a numeric periodontal measurement with an abbreviated clinical condition.

Saying **“R3”** means 3 millimeters of Recession.

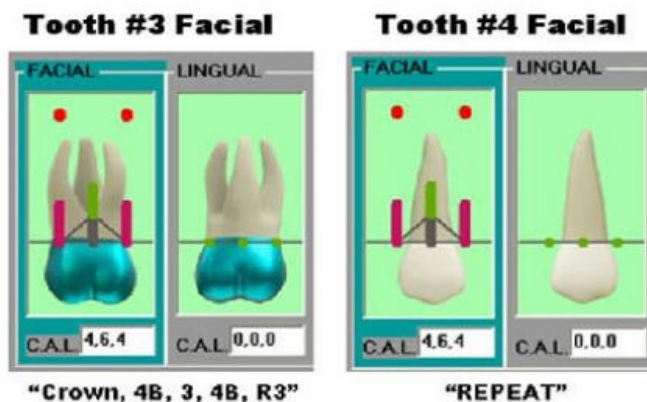
Saying **“Tri Mesial 3”** means Class III Mesio-lingual Trifurcation

SHORTCUT COMMANDS direct PerioPal to chart the verbalized data in a specific manner.

Saying **“Repeat”** indicates the data matches the previous tooth surface.

Saying **“InterBleed”** indicates interproximal bleeding.

Three great benefits come from using this innovative technique: voice recognition accuracy is greatly increased, there is flexible entry of data; and users can efficiently perform the exam in a single pass.



Confirmation Sounds: keep users on track!

As the exam occurs, tooth numbers are spoken to the clinician according to an automatic Tooth Sequence determined by the user during the initial setup of the software. When the program is prompted to move from one arch or tooth surface to the next, the program verbalizes the tooth position.

“Upper”, “Lower”, “Facial”, or “Lingual”

PerioPal uses two distinct audible tones to confirm the recording of data. A “**CLICK**” indicates facial surface data; a “**POP**” indicates lingual surface data. Spoken tooth numbers and audible tones allow the clinicians to more accurately record a periodontal exam, focus visual attention in the oral cavity, and perform the exam with greater ease.

Flexible Data Entry: see it, say it

PerioPal promotes a complete and comprehensive periodontal exam – not just 'pocket charting'.

The order of data entry for each tooth is flexible. A **single** PerioPal command can efficiently enroll **multiple** data entries at the same time. Other systems must record periodontal data in multiple screen passes or touch external buttons with hand, foot, or both for each data entry.

Single Pass Data Capture:

PerioPal was engineered to perform the exam in a single pass through the mouth.

Other programs have a set path of data entry that is charted accordingly until it is reprogrammed or unlocked to allow charting the order of data entry. Users have also reported the tedium of being required to navigate through several dialog boxes and cascading menus in order to perform simple data entry.

SideBar: real time alerts and follow up

Clinical conditions such as tooth anatomy, malpositions of teeth, dental restorations, dental appliances, and plaque deposits contribute to periodontal disease. If such conditions are observed, the exam may be interrupted and observations can be recorded in real time by giving the verbal command “**SIDEBAR**”.

The SideBar screen automatically appears allowing the verbal recording of 72 additional clinical elements.

ReProbe: charting 'cruise control'

Unique to PerioPal, **ReProbe** is a command used to re-evaluate site specific areas of concern.

ReProbe instructs PerioPal to automatically determine which teeth need re-examination from a previously complete exam. The system then focuses on each tooth needing re-examination and **speaks that tooth number** to the clinician following the selected Tooth Sequence. This allows the clinician to remain focused in the mouth while collecting exam data.

How Is PerioPal Licensed?

Known for its innovative approach to solving the challenges of traditional periodontal charting, PerioPal 9.0 centers on the needs of the dental practice with a sensible, annual subscription policy.

PerioPal combined the strongest features of its previous licensing to fine-tune a new and robust subscription platform. The move from the perpetual license to an annual subscription approach encourages the use of an improved periodontal solution and enables the practice to spread the expense of a new periodontal solution across different cost centers – hardware, installation, and training.

\$199.00 USD ANNUALLY: PerioPal offers a yearly subscription service for an unlimited number of users and workstations per location.

A 30-day Trial Version:

Users can download, install, and register a copy of PerioPal for a 30-day trial to be confident that PerioPal matches the needs of the practice before a yearly subscription is activated.

The free 30-day trial version is 100% functional giving the user full access to all the charting features. No payment authorization is required. At the end of the trial, the annual subscription can then be activated.

Frequently Asked Questions:

Do I have to sign a long term contract?

There are no long term contracts or commitments on your part. The practice pays year to year.

Does signing up for the PerioPal annual subscription lock in the price I will pay?

When the user signs up for an annual PerioPal subscription, the annual fee is fixed based on the pricing effective the date of the initial subscription activation.

Are there any additional or hidden fees?

There are no set-up, cancellation, maintenance, or hidden fees.

Is Training and Support included with the annual subscription?

PerioPal comes with self-directed training workbooks and videos along with 45-day email support. Separate services include individualized web training, support packages, and IT services.

SEPARATE AND OPTIONAL SERVICES:

- Compatible Microphone Hardware
- Networking and Integration Services
- Support Packages
- Training Packages

SCHOOL DONATION PROGRAMS:

PerioPal has a [School Donation Program](#) for programs recognized by the Commission on Dental Accreditation.

Requirements:

- Compatible Microphone Hardware
- PerioPal's Download and Registration require Internet Access
(HIPPA and Privacy Policies Provided)
- Networking and Integration Services

Summary Of Features:

Description:

The free download versions of PerioPal are voice driven software for periodontal examinations. Using an innovative technique, users have an improved method of independent recording that shortens the enrollment time of data, increases the accuracy of the exam, and decreases the tedious task of periodontal charting.

- Download Versions: **Single PC** and **Network Installation**
- Mouse Entry of Data Supported
- Manual Probe Utilized

Voice Activation: Voice Command Technology

Voice Call-out: English following the Universal and FDI Numbering Systems

Quantity: Unlimited Workstations on a single server based on one server per location

Warranty: 12 month warranty of software product

Microphone & USB Sound Device: Purchased separately. High quality recommended for optimal results

Charting Components:

Commands verbally or manually record Probing Depths, Gingival Margins, Bleeding, Bleeding Percentages, Suppuration, Mobility, Furcations, Plaque, Keratinized Gingiva, Clinical Attachment Levels, ADA and AAP Classifications

Other Features:

The 'Accelerated Advance' option rapidly enrolls periodontal data, the 'Proposed Treatment' feature facilitates optimal clinical assessments, RePROBE automatically guides users to areas of concern. Express commands for Localized Gingivitis and Localized Early Periodontitis rapidly enter multiple conditions with a single command

Integration:

PerioPal comes Network and Bridge Ready. PerioPal has an open bridge policy: (1) [share bridge code](#) with dental systems, (2) bridge to other dental systems with a customized DataGrabber from Apteryx, or (3) write code in any language to pass exam data from PerioPal to the dental system for a seamless integration

System Upgrades: Available on website. Networked systems may require IT services for upgrades

Customer Service:

- Comprehensive Training Materials included
- 45-Day Email Support
- Support and Training Packages available
- Network and Bridge Ready

Compatible Operating Systems: Windows XP, Mac XP Pro with Parallels or Boot Camp.

Download and Registration: Require internet connection

Licensing: **\$199 ANNUAL SUBSCRIPTION** for unlimited users on a single server/location.