

How is PerioPal different from the existing voice-driven periodontal charting systems?

Technology . . . Voice Dictation vs. Voice Command:

Many voice periodontal charting software programs use **Voice Dictation** technology to control the verbal input of the exam. The big drawback of using a voice dictation system is that each word must be compared to thousands of words in a large vocabulary before it can be recognized. Voice dictation is designed for building text sentences and paragraphs.

PerioPal uses **Voice Command** technology. This speech system restricts the vocabulary to less than 200 specific words, significantly improving accuracy and speed in word recognition. With PerioPal there are fewer than 100 recognized words with any given screen. Although periodontal exams are tedious and repetitive, there are relatively few words needed to report the patient's oral health.

PerioPal was designed for voice input. Other voice activated periodontal recording systems were designed for mouse and keyboard input, then modified to support voice activation. Every facet of PerioPal is designed to facilitate accurate and rapid data capture during the recording of a periodontal exam.

Technique . . . PerioPal reduces the Number of Spoken Words!

PerioPal's vocabulary consists of patent pending abbreviations and shortcut commands that enable the accurate recording of periodontal data in a shorter amount of time by reducing the number of spoken words.

Abbreviated Commands combine a numeric periodontal measurement with an abbreviated clinical condition!

Saying "**R3**" indicates 3 millimeters of Recession.

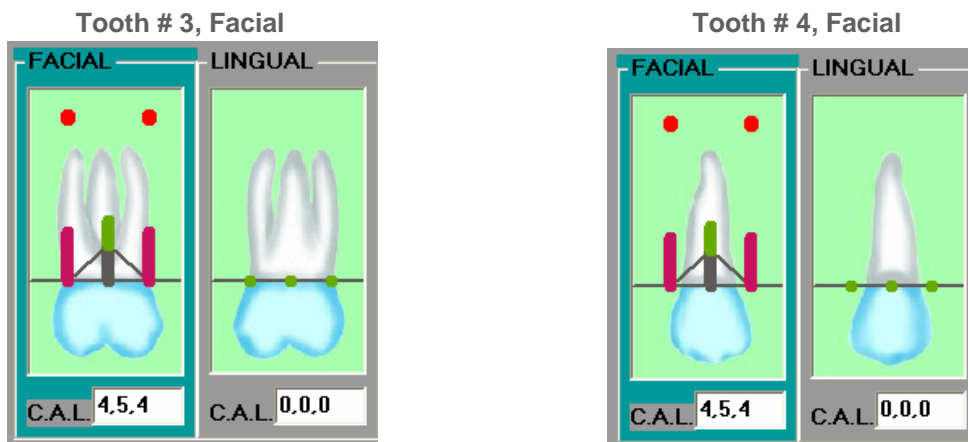
Saying "**TriMesial 3**" indicates Class III Mesio-lingual Trifurcation

Shortcut Commands direct PerioPal to chart the verbalized data in a specific manner!

Saying "**Repeat**" indicates the data matches the previous tooth surface.

Saying "**InterBleed**" indicates interproximal bleeding

Three great benefits come from using this innovative technique: voice recognition accuracy is greatly increased; there is flexible entry of data; and users can efficiently perform the exam in a single pass!



Say:
" Crown · 4 · 2 · 4 · R3 · InterBleed "

Say:
"Repeat"

Confirmation Sounds . . . Keep Users on Track!

As the exam occurs, tooth numbers are spoken to the clinician according to an automatic Tooth Sequence determined by the user during the initial setup of the software. When the program is prompted to move from one arch or tooth surface to the next, the program verbalizes the tooth position. (“Upper”, “Lower”, “Facial” or “Lingual”).

SURVEY SAYS! Users do not prefer to hear their previously recorded data repeated back by the computer. To supersede this playback, PerioPal uses two distinct audible tones to confirm the recording of data. A “Click” indicates facial surface data; a “Pop” indicates lingual surface data.

Spoken tooth numbers and audible tones allow the clinician to more accurately record a periodontal exam, focus visual attention in the oral cavity, and perform the exam with greater ease.

Flexible Data Entry . . . See it, Say it!

The order of data entry for each tooth is flexible. Using commands, clinical findings may be recorded in any order.

Other programs have a set path of data entry that is charted accordingly until it is reprogrammed or unlocked to allow changing the order of data entry. Users have also reported the tedium of being required to navigate through several dialog boxes and cascading menus in order to perform simple data entry.

Single Pass Data Capture . . .

PerioPal’s verbal commands make it possible to perform the exam in a single pass through the mouth. The clinician is able to verbalize all oral conditions as they are observed. Multiple pass methods are also supported.

SideBar . . . Record more Observations!

Clinical conditions such as tooth anatomy, malpositions of teeth, dental restorations, dental appliances, and plaque deposits contribute to periodontal disease. If such conditions are observed, the exam may be interrupted and observations can be recorded by giving the verbal command “SideBar”. A screen appears allowing the verbal recording of 72 clinical elements relating to the periodontal condition of the current tooth.

If abnormalities of the head, neck, and/or oral cavity are observed as the exam occurs, the clinician can command “Check This”, alerting re-examination of the observed quadrant location before the exam is completed.

ReProbe . . . Charting ‘Cruise Control’!

Unique to PerioPal, **ReProbe** is a command used to re-evaluate site specific areas of concern.

Re-Probe instructs PerioPal to automatically determine which teeth need re-examination from a previously completed exam. The system then focuses on each tooth needing re-examination and speaks that tooth number . This allows the clinician to remain focused in the mouth while collecting exam data.